

Connector pieces

for oil drain valves GN 880 / with or without drain hose

SPECIFICATION

Types

- Type **A**: Connector straight
- Type **B**: Connector 45°
- Type **C**: Connector 90°

Connecting nut
with hose liner
Brass

L bend 45° / 90°
Copper

O-Ring
Rubber NBR (Perbunan)

Drain hose
PVC, transparent **T**

Hose clip
Steel, zinc plated

Plug
Plastic, LD-PE

INFORMATION

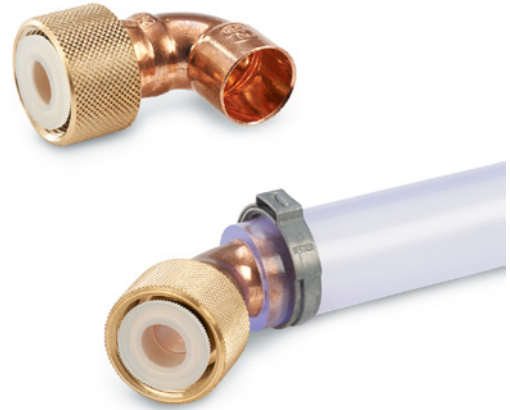
Connector pieces GN 880.1 are needed when using oil drain valves GN 880 (see page 1688).

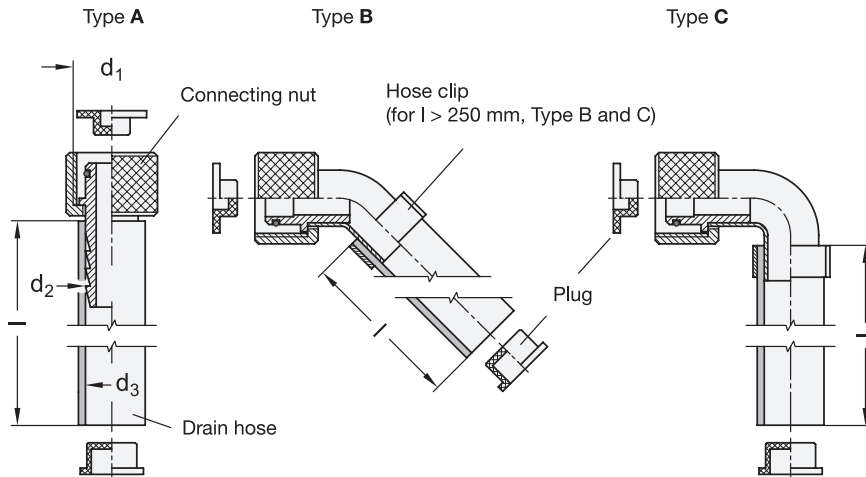
Screwing on the connector piece will activate the valve plate of the oil drain valve, allowing the oil to flow through the hose into a pan held ready.

The plug prevents remaining oil from dripping out after discharging.

ON REQUEST

- other hose length
- Drain hose with inside webbing (Nylon)





GN 880.1

Description	Size	d1	l	d2	d3	⚖️
GN 880.1-22-A	22	M 22 x 1.5	-	15	-	58
GN 880.1-26-A	26	M 26 x 1.5	-	20	-	88
GN 880.1-22-B	22	M 22 x 1.5	-	15	-	58
GN 880.1-26-B	26	M 26 x 1.5	-	20	-	86
GN 880.1-22-C	22	M 22 x 1.5	-	15	-	61
GN 880.1-26-C	26	M 26 x 1.5	-	20	-	89
GN 880.1-22-A-250-T	22	M 22 x 1.5	250	15	14	97
GN 880.1-22-A-500-T	22	M 22 x 1.5	500	15	14	129
GN 880.1-22-A-1000-T	22	M 22 x 1.5	1000	15	14	220
GN 880.1-26-A-250-T	26	M 26 x 1.5	250	20	19	162
GN 880.1-26-A-500-T	26	M 26 x 1.5	500	20	19	237
GN 880.1-26-A-1000-T	26	M 26 x 1.5	1000	20	19	387
GN 880.1-22-B-250-T	22	M 22 x 1.5	250	15	14	93
GN 880.1-22-B-500-T	22	M 22 x 1.5	500	15	14	140
GN 880.1-22-B-1000-T	22	M 22 x 1.5	1000	15	14	223
GN 880.1-26-B-250-T	26	M 26 x 1.5	250	20	19	152
GN 880.1-26-B-500-T	26	M 26 x 1.5	500	20	19	234
GN 880.1-26-B-1000-T	26	M 26 x 1.5	1000	20	19	386
GN 880.1-22-C-250-T	22	M 22 x 1.5	250	15	14	97
GN 880.1-22-C-500-T	22	M 22 x 1.5	500	15	14	140
GN 880.1-22-C-1000-T	22	M 22 x 1.5	1000	15	14	219
GN 880.1-26-C-250-T	26	M 26 x 1.5	250	20	19	153
GN 880.1-26-C-500-T	26	M 26 x 1.5	500	20	19	232
GN 880.1-26-C-1000-T	26	M 26 x 1.5	1000	20	19	389

